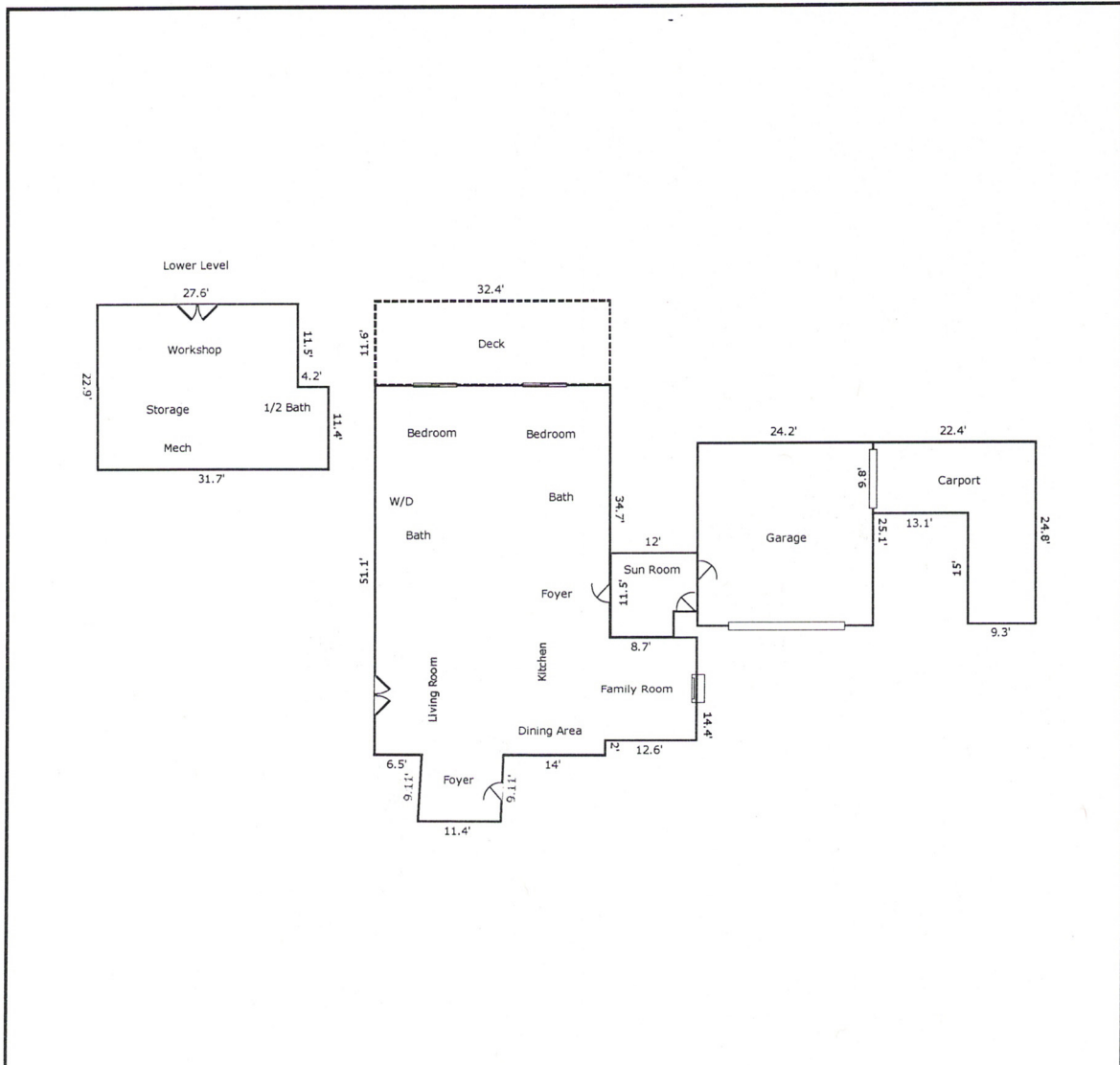


Building Sketch

Borrower				
Property Address	232 Camino Del Santiago			
City	Taos	County	Taos	State NM Zip Code 87571
Lender/Client	Terrisa Mabrey			

Finished square footage calculations for this house were made based on measured dimensions. Unfinished and unheated area are not included (ANSI Z765-2021).



TOTAL Sketch by a la mode

Area Calculations Summary

Living Area	Calculation Details	
First Floor	1930.53 Sq ft	
		0.5 × 0.4 × 9.1 = 1.82
		0.5 × 0.5 × 9.1 = 2.28
		10.9 × 9.1 = 99.19
		32.4 × 34.7 = 1124.28
		14.4 × 12.6 = 181.44
		16.4 × 31.8 = 521.52
Total Living Area (Rounded):	1931 Sq ft	
Non-living Area		
Sunroom	126.45 Sq ft	11.5 × 8.7 = 100.05 8 × 3.3 = 26.4
Basement/Workshop	678.78 Sq ft	11.4 × 4.2 = 47.88 22.9 × 27.5 = 629.75 0.5 × 22.9 × 0.1 = 1.14
2 Car Garage	607.42 Sq ft	25.1 × 24.2 = 607.42
Carport	359.02 Sq ft	9.8 × 13.1 = 128.38 24.8 × 9.3 = 230.64
Deck	375.84 Sq ft	32.4 × 11.6 = 375.84