

LOT 5
4.7332 ACRES

LOT 4
2.0932 ACRES

LOT 3
2.3349 ACRES

BUILDING ENVELOPE

BUILDING ENVELOPE

BUILDING ENVELOPE

BUILDING ENVELOPE

DRAGE WEAR EDGE WATER

40' X 40' W/1 EASEMENT LINE EASEMENT 14' PRIVATE

L 2

MC 87

SET WC

SET WC

SET WC

SET WC

SET WC

SET WC

SET WC

L 5

L 3

L 2

L 1

L 4

L 5

L 6

L 7

L 8

L 9

L 10

L 34

L 33

L 24

L 23

L 22

L 21

L 20

L 19

L 18

L 17

L 16

L 15

L 14

L 13

L 12

L 11

L 10

L 31

L 30

L 29

L 28

L 27

L 26

L 25

L 24

L 23

L 22

L 21

L 20

L 19

L 18

L 17

L 16

L 15

L 37

L 36

L 35

L 34

L 33

L 32

L 31

L 30

L 29

L 28

L 27

L 26

L 25

L 24

L 23

L 22

L 21

L 32

L 31

L 30

L 29

L 28

L 27

L 26

L 25

L 24

L 23

L 22

L 21

L 20

L 19

L 18

L 17

L 16

L 31

L 30

L 29

L 28

L 27

L 26

L 25

L 24

L 23

L 22

L 21

L 20

L 19

L 18

L 17

L 16

L 15

L 30

L 29

L 28

L 27

L 26

L 25

L 24

L 23

L 22

L 21

L 20

L 19

L 18

L 17

L 16

L 15

L 14

L 29

L 28

L 27

L 26

L 25

L 24

L 23

L 22

L 21

L 20

L 19

L 18

L 17

L 16

L 15

L 14

L 13

L 28

L 27

L 26

L 25

L 24

L 23

L 22

L 21

L 20

L 19

L 18

L 17

L 16

L 15

L 14

L 13

L 12

L 27

L 26

L 25

L 24

L 23

L 22

L 21

L 20

L 19

L 18

L 17

L 16

L 15

L 14

L 13

L 12

L 11

L 11

L 10

L 9

L 8

L 7

L 6

L 5

L 4

L 3

L 2

L 1

L 0

L -1

L -2

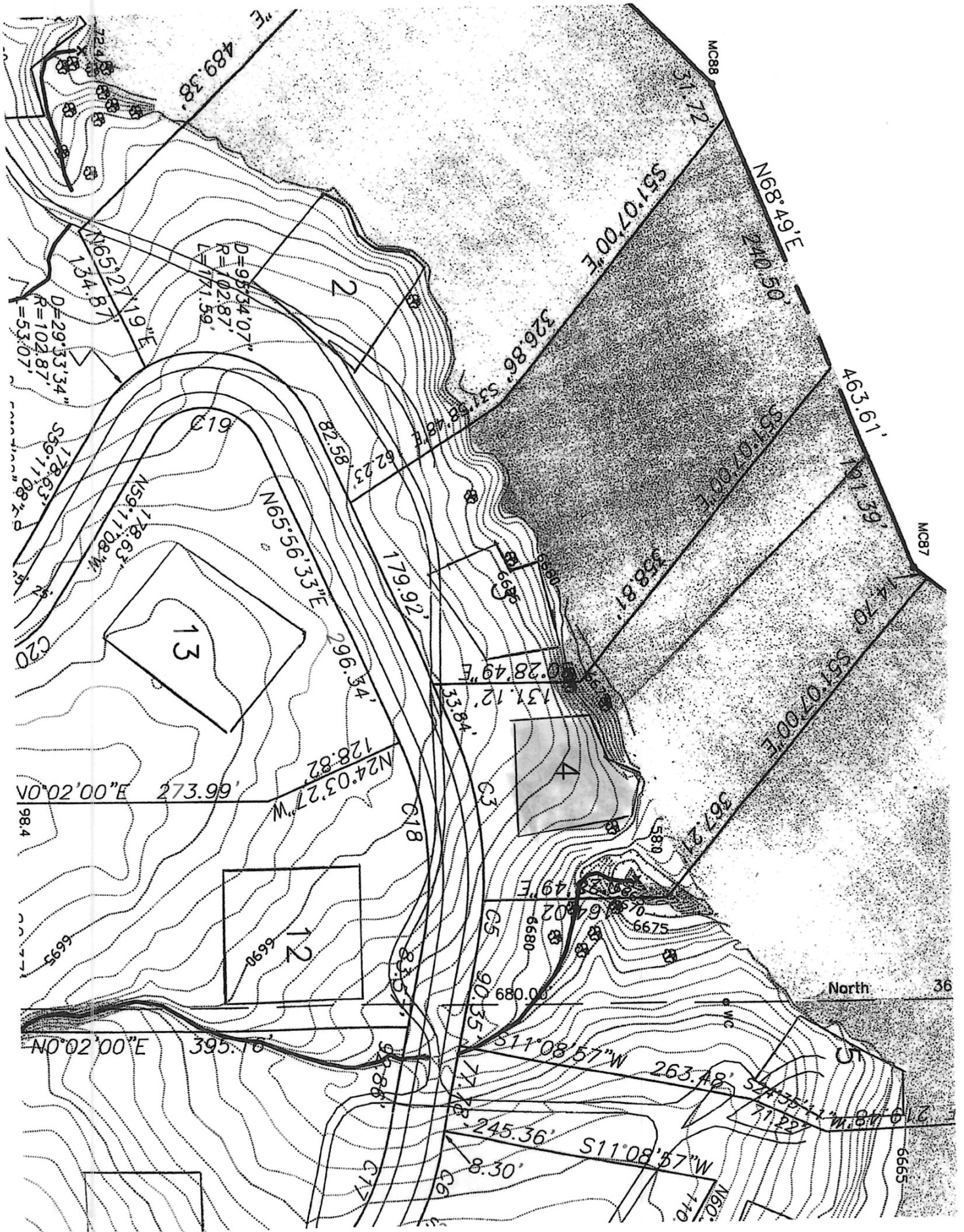
L -3

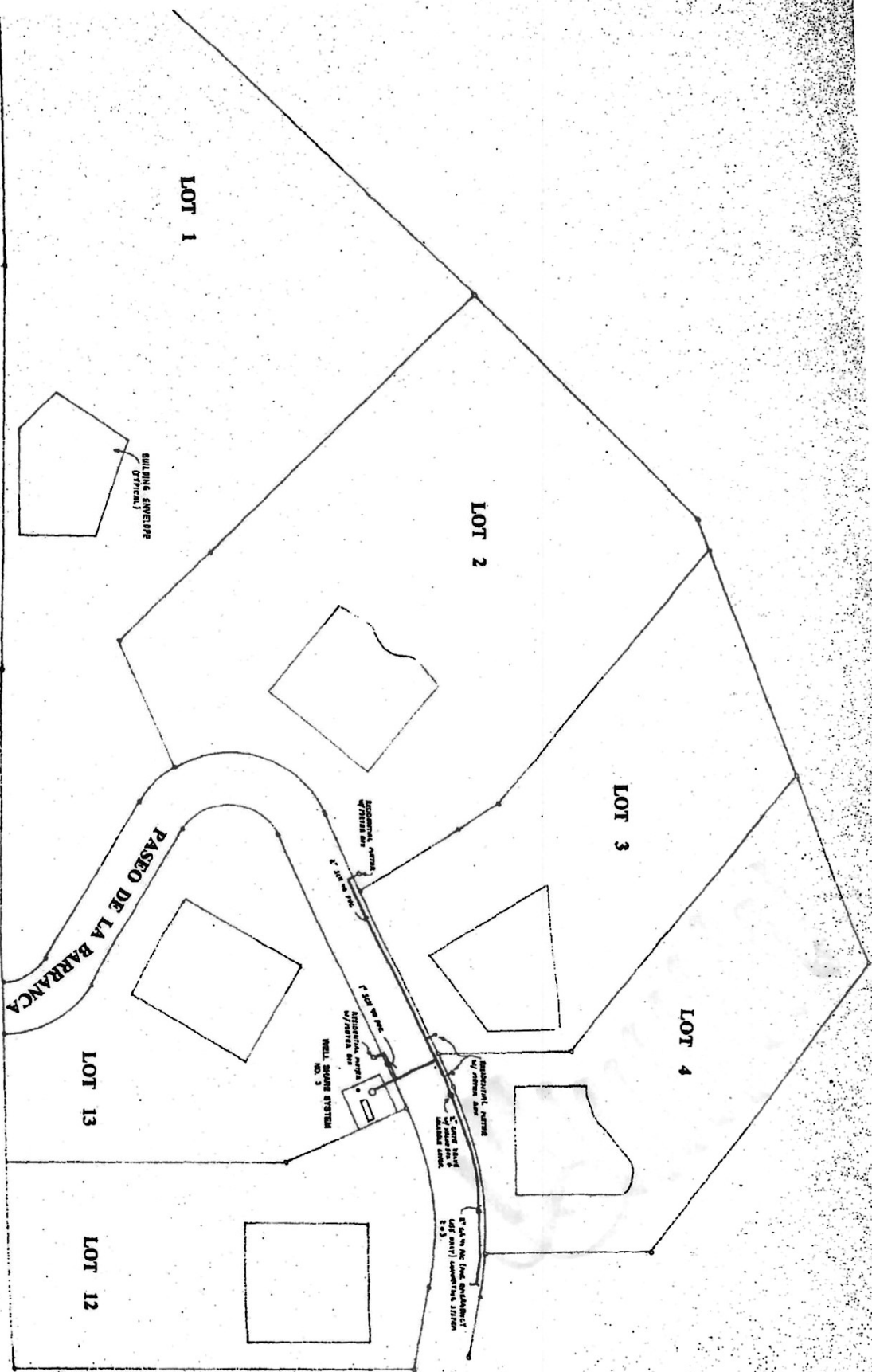
L -4

L -5

Barranca del Pueblo — Building Envelope Size & Proximity Information

<i>Lot No.</i>	<i>Lot Size</i>	<i>Building Envelope</i>	<i>% of Lot</i>	<i>Road Set-back</i>	<i>Envelope Set-back</i>	<i>Separation of Envelopes</i>	<i>Envelope Dimensions</i>
<i>Rio Pueblo Frontage</i>							
1	5.5971 ac.	±10,000 Sq. Ft.	4.1%	±250 Ft.	±15 Ft.	±234 Ft.	ireg. 74 x 104
2	4.0132 ac.	±12,000 Sq. Ft.	6.9%	±50 Ft.	±96 Ft.	±194 Ft.	122 x 105 avg.
3	2.3349 ac.	±6,000 Sq. Ft.	5.9%	±38 Ft.	±24 Ft.	±54 Ft.	ireg. 94 x 70
4	2.0932 ac.	±8,000 Sq. Ft.	8.8%	±35 Ft.	±60 Ft.	±54 Ft.	ireg. 104 x 66
5	4.7332 ac.	±7,600 Sq. Ft.	3.7%	±260 Ft.	±10 Ft.	±96 Ft.	ireg. 104 x 70
<i>Arroyo Alamo Frontage</i>							
6	2.0062 ac.	±6,300 Sq. Ft.	7.2%	±276 Ft.	±20 Ft.	±56 Ft.	ireg. 100 x 70
7	2.0038 ac.	±7,500 Sq. Ft.	8.6%	±244 Ft.	±35 Ft.	±56 Ft.	ireg. 94 x 80
8	2.0123 ac.	±7,000 Sq. Ft.	8.0%	±88 Ft.	±36 Ft.	±110 Ft.	ireg. 80 x 95
9	2.0043 ac.	±7,500 Sq. Ft.	8.6%	±15 Ft.	±15 Ft.	±86 Ft.	ireg. 100 x 60
<i>Interior</i>							
10	2.1771 ac.	±14,000 Sq. Ft.	14.8%	±15 Ft.	±15 Ft.	±86 Ft.	70 x 200
11	2.5171 ac.	±15,200 Sq. Ft.	13.9%	±50 Ft.	±50 Ft.	±150 Ft.	152 x 100
12	2.0017 ac.	±14,400 Sq. Ft.	16.5%	±42 Ft.	±25 Ft.	±120 Ft.	120 x 120
13	2.0003 ac.	±15,400 Sq. Ft.	17.7%	±38 Ft.	±38 Ft.	±122 Ft.	140 x 110
Gross	37.7941 ac.	±130,900 Sq. Ft. Gross Area	8.0% 100%				

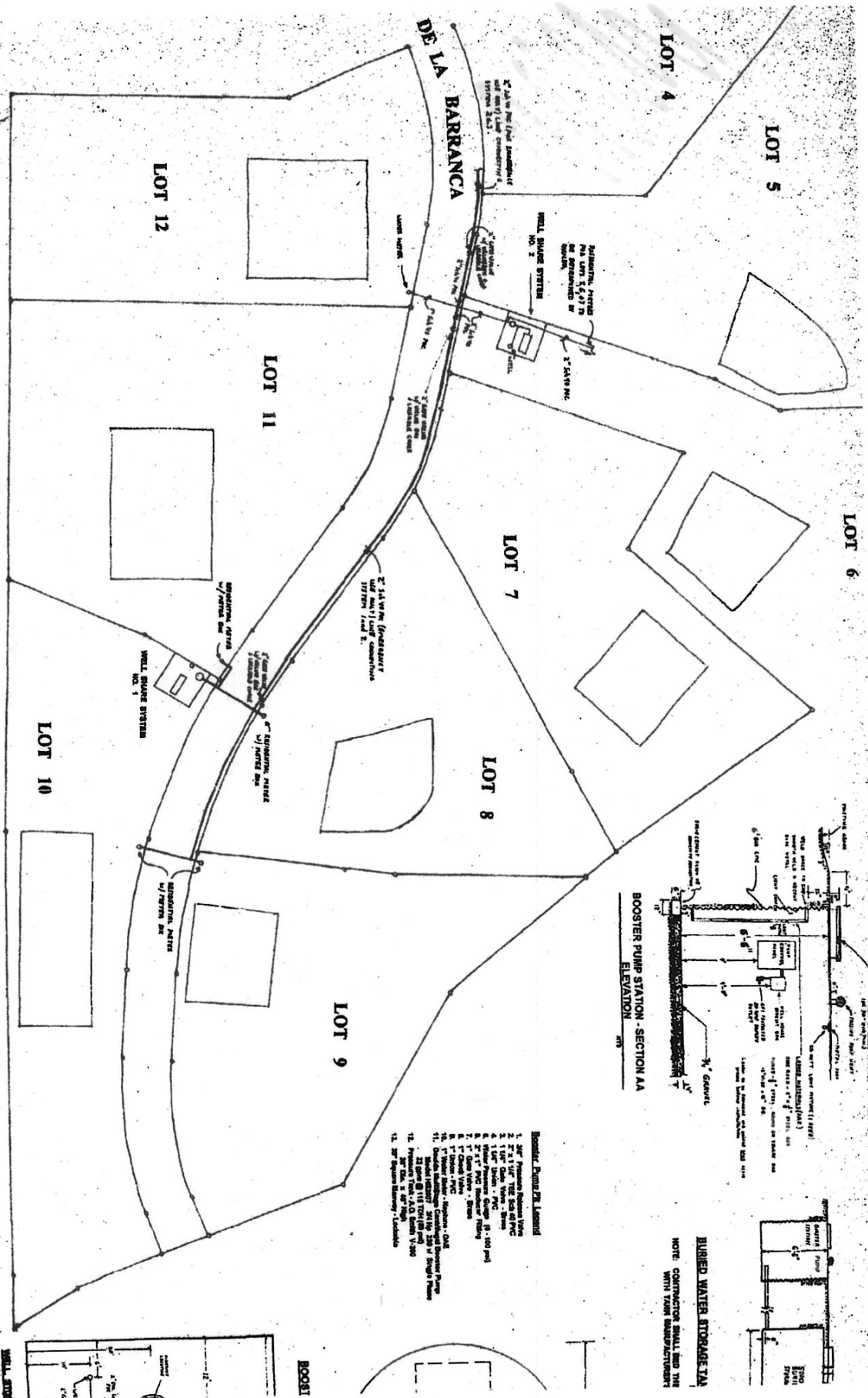




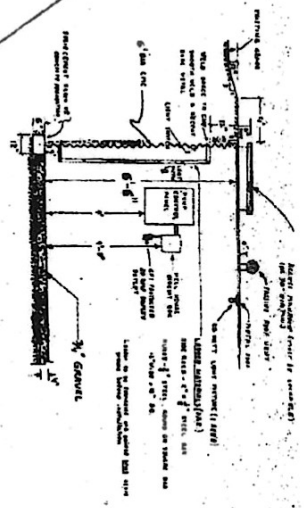
SUBDIVISION WATER SYSTEM LAYOUT
SCALE: 1" = 40'

SUBDIVISION WATER SYSTEM LAYOUT

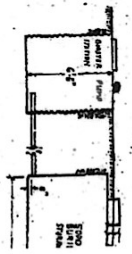
SCALE: 1" = 40'



BOOSTER PUMP STATION - SECTION AA
ELEVATION



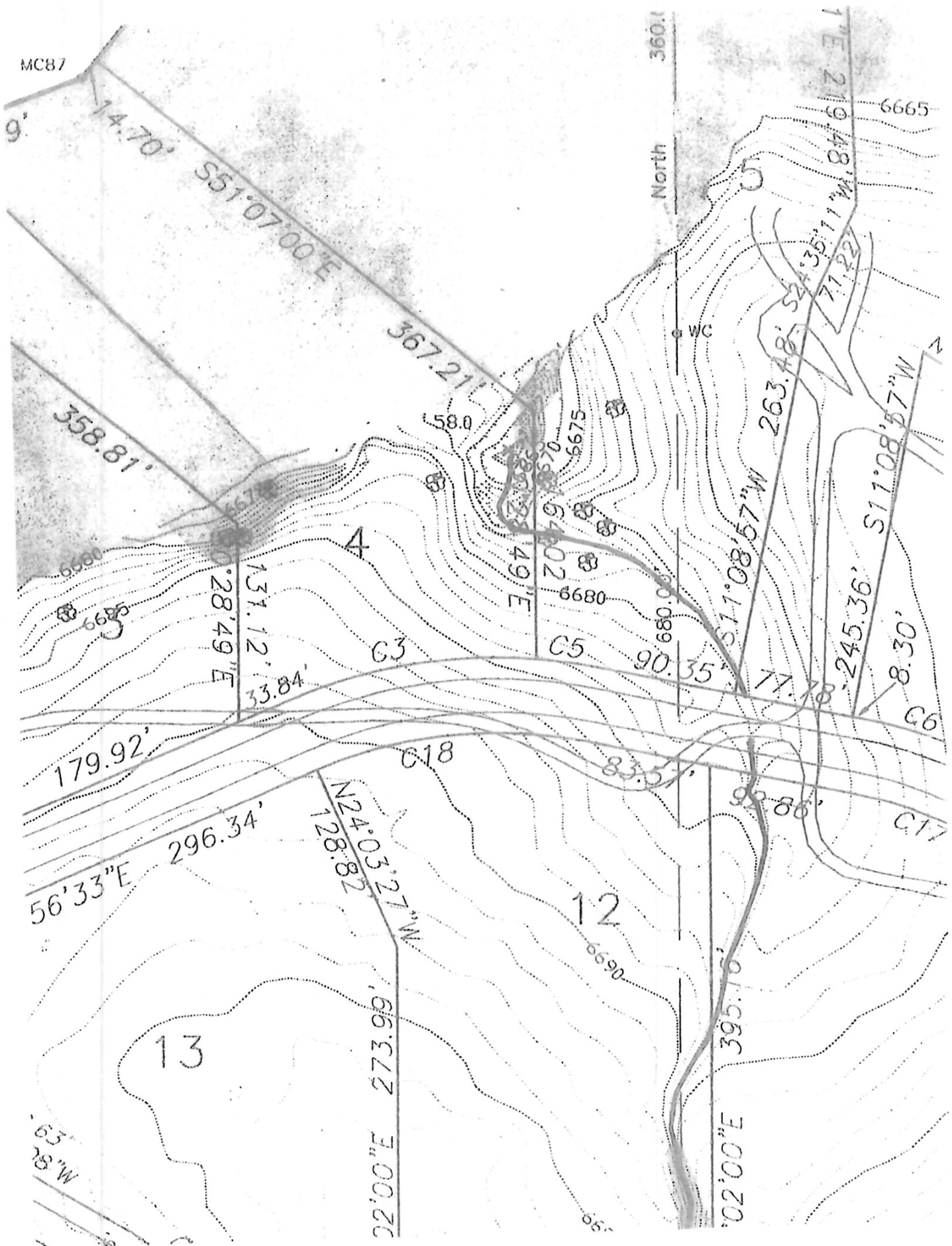
BURIED WATER STORAGE TANK
NOTE: CONTRACTOR SHALL END THE WITH TANK MANUFACTURER



- Booster Pumping Materials**
1. 30" Polypropylene Storage Tank
 2. 2" 1/2" Cast Iron Pipe
 3. 1" 1/2" Cast Iron Pipe
 4. 1" 1/2" Cast Iron Pipe
 5. 1" 1/2" Cast Iron Pipe
 6. 1" 1/2" Cast Iron Pipe
 7. 1" 1/2" Cast Iron Pipe
 8. 1" 1/2" Cast Iron Pipe
 9. 1" 1/2" Cast Iron Pipe
 10. 1" 1/2" Cast Iron Pipe
 11. 1" 1/2" Cast Iron Pipe
 12. 1" 1/2" Cast Iron Pipe
 13. 1" 1/2" Cast Iron Pipe
 14. 1" 1/2" Cast Iron Pipe
 15. 1" 1/2" Cast Iron Pipe
 16. 1" 1/2" Cast Iron Pipe
 17. 1" 1/2" Cast Iron Pipe
 18. 1" 1/2" Cast Iron Pipe
 19. 1" 1/2" Cast Iron Pipe
 20. 1" 1/2" Cast Iron Pipe
 21. 1" 1/2" Cast Iron Pipe
 22. 1" 1/2" Cast Iron Pipe
 23. 1" 1/2" Cast Iron Pipe
 24. 1" 1/2" Cast Iron Pipe
 25. 1" 1/2" Cast Iron Pipe
 26. 1" 1/2" Cast Iron Pipe
 27. 1" 1/2" Cast Iron Pipe
 28. 1" 1/2" Cast Iron Pipe
 29. 1" 1/2" Cast Iron Pipe
 30. 1" 1/2" Cast Iron Pipe

ONE (1) INCH SCALE OF
WATER SYSTEM LAYOUT

MC87



North 360.0

WC

6665

58.0

6675

6680

6685

6690

6695

6699

6700

6705

6710

6715

6720

6725

6730

6735

6740

6745

6750

6755

6760

6765

6770

6775

6780

6785

6790

6795

6800

6805

6810

6815

6820

6825

6830

6835

6840

6845

6850

6855

6860

6865

6870

6875

6880

6885

6890

6895

6900

6905

6910

6915

6920

6925

6930

6935

6940

6945

6950

6955

6960

6965

6970

6975

6980

6985

6990

6995

7000

7005

7010

7015

7020

7025

7030

7035

7040

7045

7050

7055

7060

7065

7070

7075

7080

7085

7090

7095

7100

7105

7110

7115

7120

7125

7130

7135

7140

7145

7150

7155

7160

7165

7170