

TYPICAL 1948 - HYDROLOGY CALCULATIONS

Reference: Storm Drainage Ordinance #47-05

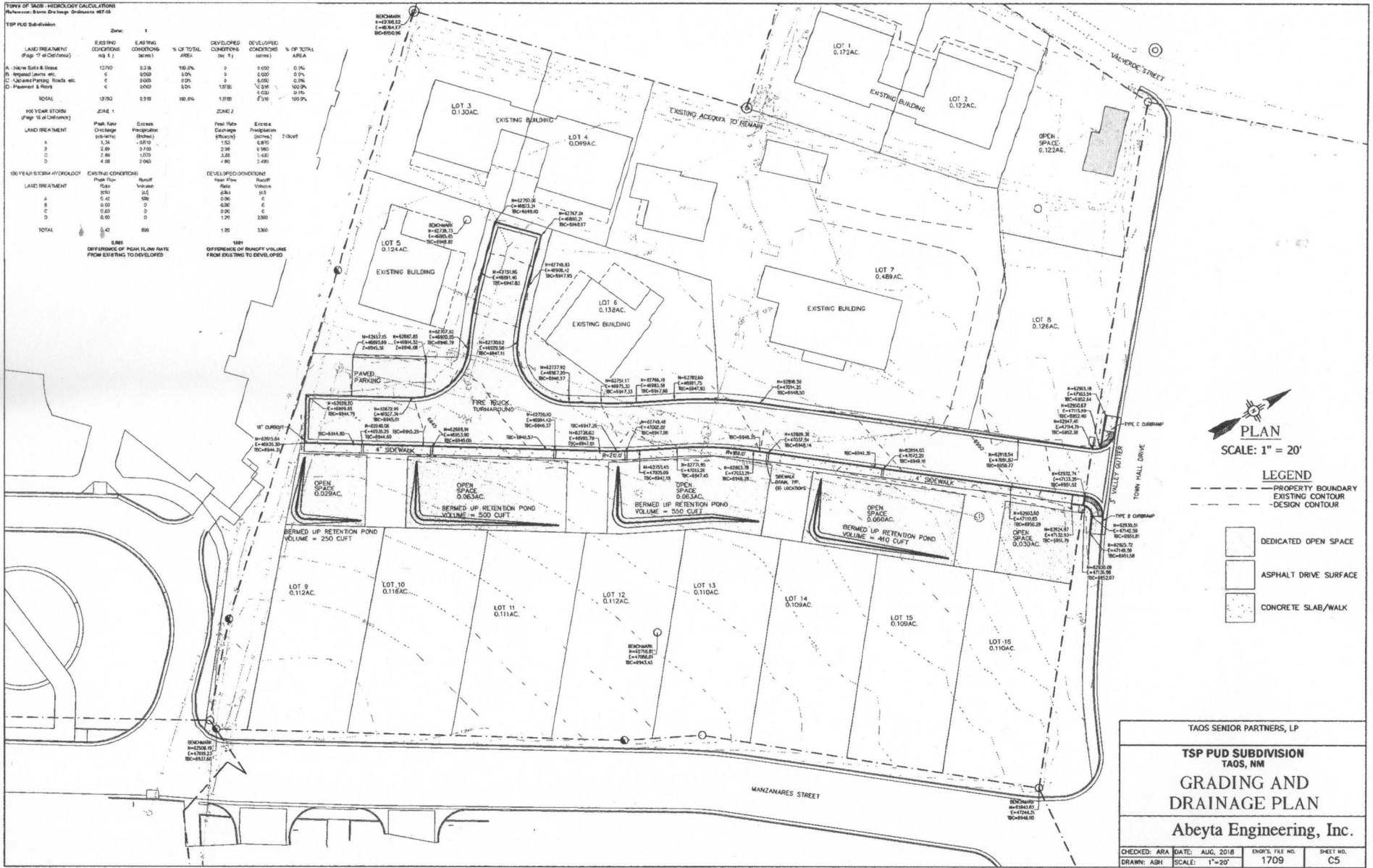
TSP PUD Subdivision		Zone: 1		
LAND TREATMENT (Page 14 of Ordinance)	EXISTING CONDITIONS (sq ft)	% OF TOTAL AREA	DEVELOPED CONDITIONS (sq ft)	% OF TOTAL AREA
A. New GOLF & Dunes	1270	2.1%	0	0.0%
B. Improved Tennis, etc.	0	0.0%	0	0.0%
C. Unimproved Parking, Roads, etc.	0	0.0%	0	0.0%
D. Paved Areas & Roofs	0	0.0%	1378	2.4%
TOTAL	1270	2.1%	1378	2.4%

100 YEAR STORM (Page 14 of Ordinance)	EXISTING CONDITIONS	DEVELOPED CONDITIONS
Peak Run Discharge (cfs)	Peak Run Discharge (cfs)	Peak Run Discharge (cfs)
A	1.34	1.52
B	2.88	3.18
C	7.88	8.61
D	4.08	4.49

100 YEAR STORM HYDROLOGY	EXISTING CONDITIONS	DEVELOPED CONDITIONS
Run Rate (in/hr)	Run Rate (in/hr)	Run Rate (in/hr)
A	0.03	0.03
B	0.03	0.03
C	0.03	0.03
D	0.03	0.03
TOTAL	0.03	0.03

DIFFERENCE OF PEAK FLOW RATE FROM EXISTING TO DEVELOPED

DIFFERENCE OF PEAK FLOW RATE FROM EXISTING TO DEVELOPED



PLAN
SCALE: 1" = 20'

LEGEND

- PROPERTY BOUNDARY
- EXISTING CONTOUR
- DESIGN CONTOUR
- DEDICATED OPEN SPACE
- ASPHALT DRIVE SURFACE
- CONCRETE SLAB/WALK

TAOS SENIOR PARTNERS, LP

TSP PUD SUBDIVISION
TAOS, NM

GRADING AND DRAINAGE PLAN

Abeyta Engineering, Inc.

CHECKED: ARA DATE: AUG. 2018 ENGR'S. FILE NO. SHEET NO.
DRAWN: ASH SCALE: 1"=20' 1709 C5

1709SHEETS.DWG