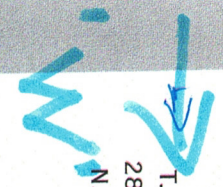


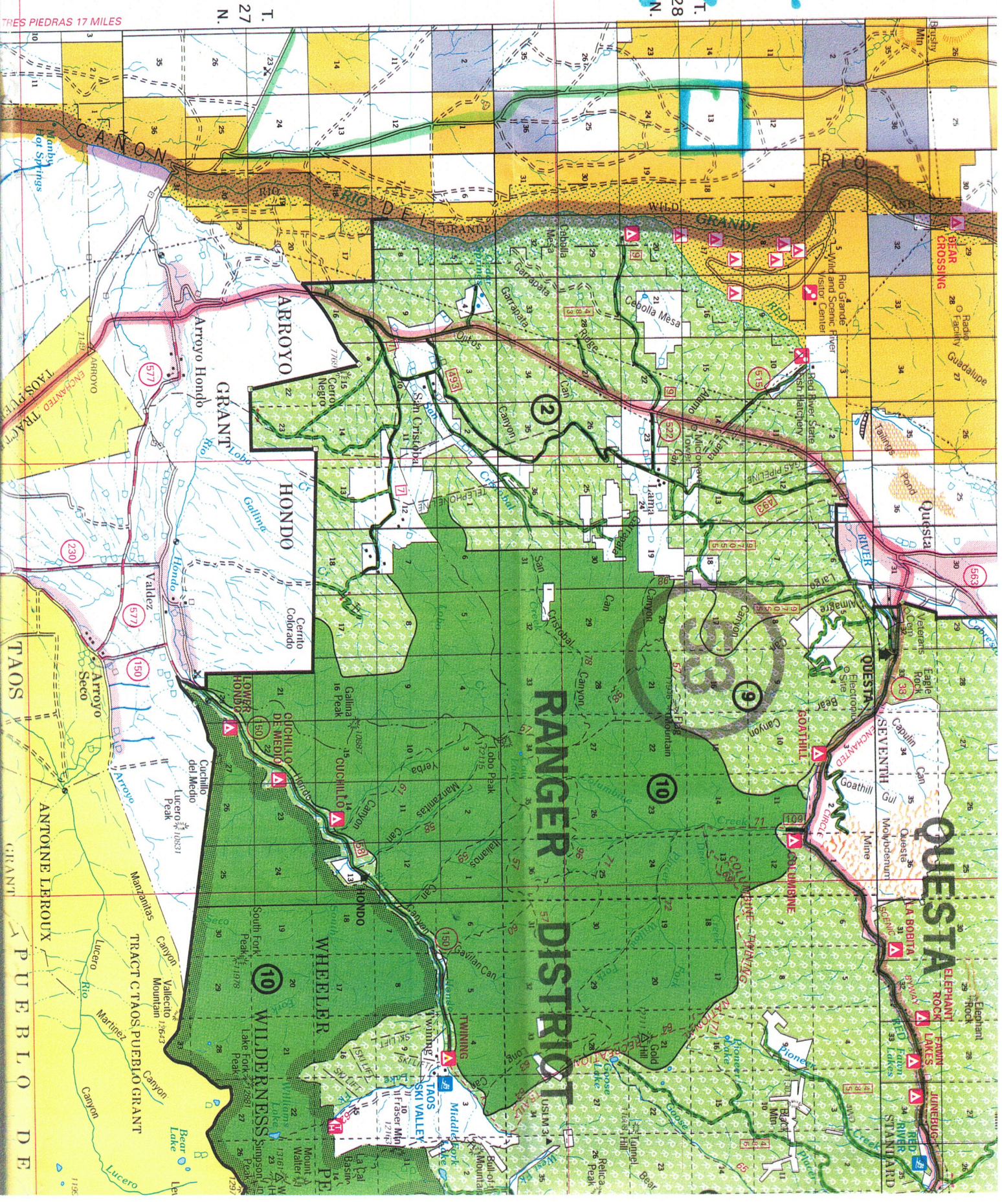
610 E.



36° 37' 30"

36° 30' 00"

TRES PIEDRAS 17 MILES



T. 28 N.

T. 27 N.

PUEBLO DE

QUESTA

RANGER DISTRICT

WILDERNESS

TAOS

ANTOINE LEROUX

TRACT TAOS PUEBLO GRANT

ARROYO HONDO

HONDO

CUCHILLO DE MEDIO

WHEELER

QUESTA SEVENTH

QUESTA

GOATHILL

QUESTA ELEPHANT ROCK LAKES JUNEBUG RIDGE STAMMARD