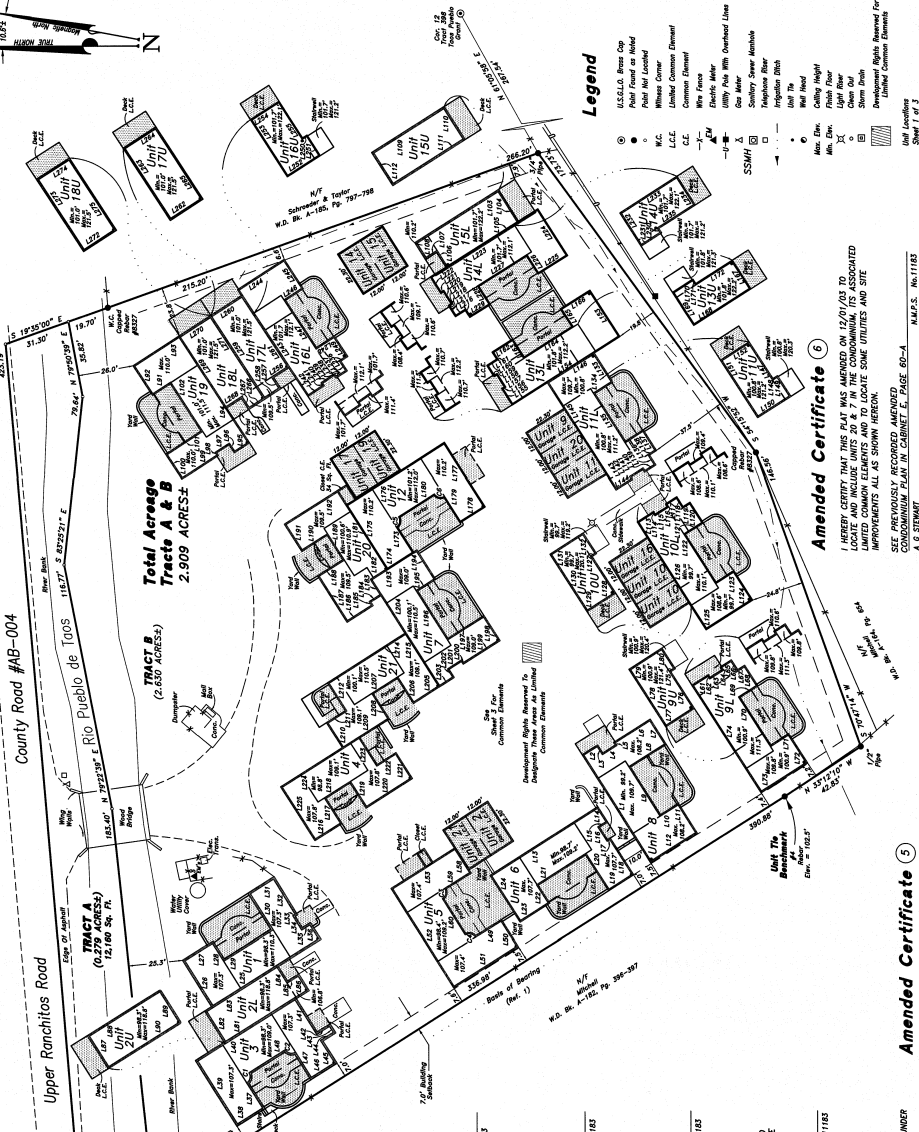


SCALE 1" = 30'

0' 15' 30' 60' 90'



Notes & References

- BEARINGS ARE BASED ON A PLAT OF SURVEY FOR M.C. STUBBS & SONS, BEING RECORDED IN BOOK 17, PAGE 61, OF THE PUBLIC RECORDS OF SANGRE DE TORO COUNTY, NEW MEXICO, DATED OCTOBER 27, 1988 AND HAVING SURVEY NO. 377, REFINER DATA SHOWING IS TAHER DIRECTLY FROM SAID PLAT.
- THE SAME BEARINGS WERE FORMALLY DISCUSSED IN A WARRANTY DEED — WENT & ANELA LEMUS TO R. & A. COMPANY IN B.C. M-285, P.C. 272-281 ON DECEMBER 31, 2001.
- SITE ELEVATIONS ARE ASSUMED & USED FOR UNIT TIES AND MINIMUM & MAXIMUM ELEVATIONS.
- A PORTION OF THE PROPERTIES SHOWN HEREON FALL UNDER A FLOOD INSURANCE PROGRAM COMMUNITY PANEL NO. 358395 DATES TO, DATED JANUARY 9, 1989.

Amended Certificate 1

I HEREBY CERTIFY THAT THIS PLAT WAS AMENDED ON 11/27/02 TO LOCATE AND INCLUDE UNITS 1, 2, 5 AND 9 IN THE CONDOMINIUM.

SEE PREVIOUSLY RECORDED AMENDED CONDOMINIUM PLAN IN CABINET E, PAGE 80-A.

A. G. STEWART M.A.P.S. No. 11185

Amended Certificate 2

I HEREBY CERTIFY THAT THIS PLAT WAS AMENDED ON 05/07/03 TO LOCATE AND INCLUDE UNITS 5 AND 9 IN THE CONDOMINIUM.

SEE PREVIOUSLY RECORDED AMENDED CONDOMINIUM PLAN IN CABINET E, PAGE 80-A.

A. G. STEWART M.A.P.S. No. 11185

Amended Certificate 3

I HEREBY CERTIFY THAT THIS PLAT WAS AMENDED ON 07/10/03 TO LOCATE AND INCLUDE UNITS 2, 15 AND 19 IN THE CONDOMINIUM.

SEE PREVIOUSLY RECORDED AMENDED CONDOMINIUM PLAN IN CABINET E, PAGE 80-A.

A. G. STEWART M.A.P.S. No. 11185

Amended Certificate 4

I HEREBY CERTIFY THAT THIS PLAT WAS AMENDED ON 07/16/03 TO LOCATE AND INCLUDE UNIT 6 IN THE CONDOMINIUM ITS ASSOCIATED LIMITED COMMON ELEMENTS AND TO LOCATE SOME UTILITIES AND SITE IMPROVEMENTS ALL AS SHOWN HEREON.

SEE PREVIOUSLY RECORDED AMENDED CONDOMINIUM PLAN IN CABINET E, PAGE 80-A.

A. G. STEWART M.A.P.S. No. 11185

Surveyor's Certificate

I HEREBY CERTIFY THAT THIS PLAT AND THE NOTES HEREON ARE AN ACCURATE DELINEATION OF A FIELD SURVEY COMPLETED BY ME OR UNDER MY CLOSE PERSONAL SUPERVISION AND IN ACCORDANCE WITH THE REQUIREMENTS OF THE NEW MEXICO CONDOMINIUM ACT AND CONTAINS ALL THE INFORMATION REQUIRED BY SECTION 47-7B-9 OF THE NEW MEXICO CONDOMINIUM ACT.

SEE PREVIOUSLY RECORDED AMENDED CONDOMINIUM PLAN IN CABINET E, PAGE 80-A.

A. G. STEWART M.A.P.S. No. 11185

Amended Certificate 5

I HEREBY CERTIFY THAT THIS PLAT WAS AMENDED ON 11/10/03 TO LOCATE AND INCLUDE UNITS 20 & 7 IN THE CONDOMINIUM ITS ASSOCIATED LIMITED COMMON ELEMENTS AND TO LOCATE SOME UTILITIES AND SITE IMPROVEMENTS ALL AS SHOWN HEREON.

SEE PREVIOUSLY RECORDED AMENDED CONDOMINIUM PLAN IN CABINET E, PAGE 80-A.

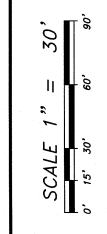
A. G. STEWART M.A.P.S. No. 11185

Amended Certificate 6

I HEREBY CERTIFY THAT THIS PLAT WAS AMENDED ON 12/07/03 TO LOCATE AND INCLUDE UNITS 20 & 7 IN THE CONDOMINIUM ITS ASSOCIATED LIMITED COMMON ELEMENTS AND TO LOCATE SOME UTILITIES AND SITE IMPROVEMENTS ALL AS SHOWN HEREON.

SEE PREVIOUSLY RECORDED AMENDED CONDOMINIUM PLAN IN CABINET E, PAGE 80-A.

A. G. STEWART M.A.P.S. No. 11185



Legend

- 1. 2" 1/2" 20' 10" 25' 30' 40'
- 2. 1" 2" 3" 4" 5" 6" 8" 10" 12" 15" 20" 25" 30" 40"
- 3. 1" 2" 3" 4" 5" 6" 8" 10" 12" 15" 20" 25" 30" 40"
- 4. 1" 2" 3" 4" 5" 6" 8" 10" 12" 15" 20" 25" 30" 40"
- 5. 1" 2" 3" 4" 5" 6" 8" 10" 12" 15" 20" 25" 30" 40"
- 6. 1" 2" 3" 4" 5" 6" 8" 10" 12" 15" 20" 25" 30" 40"
- 7. 1" 2" 3" 4" 5" 6" 8" 10" 12" 15" 20" 25" 30" 40"
- 8. 1" 2" 3" 4" 5" 6" 8" 10" 12" 15" 20" 25" 30" 40"
- 9. 1" 2" 3" 4" 5" 6" 8" 10" 12" 15" 20" 25" 30" 40"
- 10. 1" 2" 3" 4" 5" 6" 8" 10" 12" 15" 20" 25" 30" 40"
- 11. 1" 2" 3" 4" 5" 6" 8" 10" 12" 15" 20" 25" 30" 40"
- 12. 1" 2" 3" 4" 5" 6" 8" 10" 12" 15" 20" 25" 30" 40"
- 13. 1" 2" 3" 4" 5" 6" 8" 10" 12" 15" 20" 25" 30" 40"
- 14. 1" 2" 3" 4" 5" 6" 8" 10" 12" 15" 20" 25" 30" 40"
- 15. 1" 2" 3" 4" 5" 6" 8" 10" 12" 15" 20" 25" 30" 40"
- 16. 1" 2" 3" 4" 5" 6" 8" 10" 12" 15" 20" 25" 30" 40"
- 17. 1" 2" 3" 4" 5" 6" 8" 10" 12" 15" 20" 25" 30" 40"
- 18. 1" 2" 3" 4" 5" 6" 8" 10" 12" 15" 20" 25" 30" 40"
- 19. 1" 2" 3" 4" 5" 6" 8" 10" 12" 15" 20" 25" 30" 40"
- 20. 1" 2" 3" 4" 5" 6" 8" 10" 12" 15" 20" 25" 30" 40"
- 21. 1" 2" 3" 4" 5" 6" 8" 10" 12" 15" 20" 25" 30" 40"
- 22. 1" 2" 3" 4" 5" 6" 8" 10" 12" 15" 20" 25" 30" 40"
- 23. 1" 2" 3" 4" 5" 6" 8" 10" 12" 15" 20" 25" 30" 40"
- 24. 1" 2" 3" 4" 5" 6" 8" 10" 12" 15" 20" 25" 30" 40"
- 25. 1" 2" 3" 4" 5" 6" 8" 10" 12" 15" 20" 25" 30" 40"
- 26. 1" 2" 3" 4" 5" 6" 8" 10" 12" 15" 20" 25" 30" 40"
- 27. 1" 2" 3" 4" 5" 6" 8" 10" 12" 15" 20" 25" 30" 40"
- 28. 1" 2" 3" 4" 5" 6" 8" 10" 12" 15" 20" 25" 30" 40"
- 29. 1" 2" 3" 4" 5" 6" 8" 10" 12" 15" 20" 25" 30" 40"
- 30. 1" 2" 3" 4" 5" 6" 8" 10" 12" 15" 20" 25" 30" 40"
- 31. 1" 2" 3" 4" 5" 6" 8" 10" 12" 15" 20" 25" 30" 40"
- 32. 1" 2" 3" 4" 5" 6" 8" 10" 12" 15" 20" 25" 30" 40"
- 33. 1" 2" 3" 4" 5" 6" 8" 10" 12" 15" 20" 25" 30" 40"
- 34. 1" 2" 3" 4" 5" 6" 8" 10" 12" 15" 20" 25" 30" 40"
- 35. 1" 2" 3" 4" 5" 6" 8" 10" 12" 15" 20" 25" 30" 40"
- 36. 1" 2" 3" 4" 5" 6" 8" 10" 12" 15" 20" 25" 30" 40"
- 37. 1" 2" 3" 4" 5" 6" 8" 10" 12" 15" 20" 25" 30" 40"
- 38. 1" 2" 3" 4" 5" 6" 8" 10" 12" 15" 20" 25" 30" 40"
- 39. 1" 2" 3" 4" 5" 6" 8" 10" 12" 15" 20" 25" 30" 40"
- 40. 1" 2" 3" 4" 5" 6" 8" 10" 12" 15" 20" 25" 30" 40"
- 41. 1" 2" 3" 4" 5" 6" 8" 10" 12" 15" 20" 25" 30" 40"
- 42. 1" 2" 3" 4" 5" 6" 8" 10" 12" 15" 20" 25" 30" 40"
- 43. 1" 2" 3" 4" 5" 6" 8" 10" 12" 15" 20" 25" 30" 40"
- 44. 1" 2" 3" 4" 5" 6" 8" 10" 12" 15" 20" 25" 30" 40"
- 45. 1" 2" 3" 4" 5" 6" 8" 10" 12" 15" 20" 25" 30" 40"
- 46. 1" 2" 3" 4" 5" 6" 8" 10" 12" 15" 20" 25" 30" 40"
- 47. 1" 2" 3" 4" 5" 6" 8" 10" 12" 15" 20" 25" 30" 40"
- 48. 1" 2" 3" 4" 5" 6" 8" 10" 12" 15" 20" 25" 30" 40"
- 49. 1" 2" 3" 4" 5" 6" 8" 10" 12" 15" 20" 25" 30" 40"
- 50. 1" 2" 3" 4" 5" 6" 8" 10" 12" 15" 20" 25" 30" 40"
- 51. 1" 2" 3" 4" 5" 6" 8" 10" 12" 15" 20" 25" 30" 40"
- 52. 1" 2" 3" 4" 5" 6" 8" 10" 12" 15" 20" 25" 30" 40"
- 53. 1" 2" 3" 4" 5" 6" 8" 10" 12" 15" 20" 25" 30" 40"
- 54. 1" 2" 3" 4" 5" 6" 8" 10" 12" 15" 20" 25" 30" 40"
- 55. 1" 2" 3" 4" 5" 6" 8" 10" 12" 15" 20" 25" 30" 40"
- 56. 1" 2" 3" 4" 5" 6" 8" 10" 12" 15" 20" 25" 30" 40"
- 57. 1" 2" 3" 4" 5" 6" 8" 10" 12" 15" 20" 25" 30" 40"
- 58. 1" 2" 3" 4" 5" 6" 8" 10" 12" 15" 20" 25" 30" 40"
- 59. 1" 2" 3" 4" 5" 6" 8" 10" 12" 15" 20" 25" 30" 40"
- 60. 1" 2" 3" 4" 5" 6" 8" 10" 12" 15" 20" 25" 30" 40"
- 61. 1" 2" 3" 4" 5" 6" 8" 10" 12" 15" 20" 25" 30" 40"
- 62. 1" 2" 3" 4" 5" 6" 8" 10" 12" 15" 20" 25" 30" 40"
- 63. 1" 2" 3" 4" 5" 6" 8" 10" 12" 15" 20" 25" 30" 40"
- 64. 1" 2" 3" 4" 5" 6" 8" 10" 12" 15" 20" 25" 30" 40"
- 65. 1" 2" 3" 4" 5" 6" 8" 10" 12" 15" 20" 25" 30" 40"
- 66. 1" 2" 3" 4" 5" 6" 8" 10" 12" 15" 20" 25" 30" 40"
- 67. 1" 2" 3" 4" 5" 6" 8" 10" 12" 15" 20" 25" 30" 40"
- 68. 1" 2" 3" 4" 5" 6" 8" 10" 12" 15" 20" 25" 30" 40"
- 69. 1" 2" 3" 4" 5" 6" 8" 10" 12" 15" 20" 25" 30" 40"
- 70. 1" 2" 3" 4" 5" 6" 8" 10" 12" 15" 20" 25" 30" 40"
- 71. 1" 2" 3" 4" 5" 6" 8" 10" 12" 15" 20" 25" 30" 40"
- 72. 1" 2" 3" 4" 5" 6" 8" 10" 12" 15" 20" 25" 30" 40"
- 73. 1" 2" 3" 4" 5" 6" 8" 10" 12" 15" 20" 25" 30" 40"
- 74. 1" 2" 3" 4" 5" 6" 8" 10" 12" 15" 20" 25" 30" 40"
- 75. 1" 2" 3" 4" 5" 6" 8" 10" 12" 15" 20" 25" 30" 40"
- 76. 1" 2" 3" 4" 5" 6" 8" 10" 12" 15" 20" 25" 30" 40"
- 77. 1" 2" 3" 4" 5" 6" 8" 10" 12" 15" 20" 25" 30" 40"
- 78. 1" 2" 3" 4" 5" 6" 8" 10" 12" 15" 20" 25" 30" 40"
- 79. 1" 2" 3" 4" 5" 6" 8" 10" 12" 15" 20" 25" 30" 40"
- 80. 1" 2" 3" 4" 5" 6" 8" 10" 12" 15" 20" 25" 30" 40"
- 81. 1" 2" 3" 4" 5" 6" 8" 10" 12" 15" 20" 25" 30" 40"
- 82. 1" 2" 3" 4" 5" 6" 8" 10" 12" 15" 20" 25" 30" 40"
- 83. 1" 2" 3" 4" 5" 6" 8" 10" 12" 15" 20" 25" 30" 40"
- 84. 1" 2" 3" 4" 5" 6" 8" 10" 12" 15" 20" 25" 30" 40"
- 85. 1" 2" 3" 4" 5" 6" 8" 10" 12" 15" 20" 25" 30" 40"
- 86. 1" 2" 3" 4" 5" 6" 8" 10" 12" 15" 20" 25" 30" 40"
- 87. 1" 2" 3" 4" 5" 6" 8" 10" 12" 15" 20" 25" 30" 40"
- 88. 1" 2" 3" 4" 5" 6" 8" 10" 12" 15" 20" 25" 30" 40"
- 89. 1" 2" 3" 4" 5" 6" 8" 10" 12" 15" 20" 25" 30" 40"
- 90. 1" 2" 3" 4" 5" 6" 8" 10" 12" 15" 20" 25" 30" 40"
- 91. 1" 2" 3" 4" 5" 6" 8" 10" 12" 15" 20" 25" 30" 40"
- 92. 1" 2" 3" 4" 5" 6" 8" 10" 12" 15" 20" 25" 30" 40"
- 93. 1" 2" 3" 4" 5" 6" 8" 10" 12" 15" 20" 25" 30" 40"
- 94. 1" 2" 3" 4" 5" 6" 8" 10" 12" 15" 20" 25" 30" 40"
- 95. 1" 2" 3" 4" 5" 6" 8" 10" 12" 15" 20" 25" 30" 40"
- 96. 1" 2" 3" 4" 5" 6" 8" 10" 12" 15" 20" 25" 30" 40"
- 97. 1" 2" 3" 4" 5" 6" 8" 10" 12" 15" 20" 25" 30" 40"
- 98. 1" 2" 3" 4" 5" 6" 8" 10" 12" 15" 20" 25" 30" 40"
- 99. 1" 2" 3" 4" 5" 6" 8" 10" 12" 15" 20" 25" 30" 40"
- 100. 1" 2" 3" 4" 5" 6" 8" 10" 12" 15" 20" 25" 30" 40"

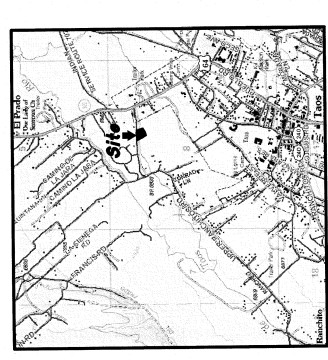
UNIT LOCATION	SWEEP 1 OF 1
RECORD NO.	
DATE OF SURVEY	11/09/02
SCALE	1" = 30'
DATE OF REVISION	
REVISION NO.	
PREPARED BY	A.G. STEWART
CHECKED BY	
DATE OF CHECK	

County Clerk Notary Information

AGS LAND SURVEYING
GIL STEWART

NEW MEXICO LICENSE NO. 11185
 P.O. BOX 444
 EL PASO, NM 88128
 PHONE: (505) 532-1131
 FAX: (505) 532-1131

County Name: **K & A Enterprises, L.L.C.**
 Address: **Arroyo Ranch, NM 87214**
 Tax Parcel Number: **7284**
 Section: **8** T28N R13E
 Zone: **R-14 - Multi Family Residential**



VICINITY MAP

668 Ss. Fl. Unit 17 Lower
 Unit 17 Upper
 Unit 18 Lower
 Unit 18 Upper
 Unit 19
 Unit 19 Lower
 Unit 19 Upper
 Unit 20
 Unit 20 Lower
 Unit 20 Upper

Amended Certificate 13

I HEREBY CERTIFY THAT THIS PLAT WAS AMENDED ON 07/27/04 TO LOCATE AND INCLUDE UNITS 11, 13, 14, 15, 16, 17 & 18 IN THE CONDOMINIUM AND ITS ASSOCIATED COMMON ELEMENTS, ALL AS SHOWN HEREON.

SEE PREVIOUSLY RECORDED AMENDED CONDOMINIUM PLAN IN CABINET E, PAGE 60-A

A G STEWART

M.A.P.S. No.17333

Amended Certificate 12

I HEREBY CERTIFY THAT THIS PLAT WAS AMENDED ON 05/26/04 TO SHOW THE GARAGE L.C.E.'S FOR UNITS 4, 10, 19 & 21 ALL AS SHOWN HEREON.

SEE PREVIOUSLY RECORDED AMENDED CONDOMINIUM PLAN IN CABINET E, PAGE 60-A

A G STEWART

M.A.P.S. No.11183

Amended Certificate 11

I HEREBY CERTIFY THAT THIS PLAT WAS AMENDED ON 07/27/04 TO LOCATE AND INCLUDE UNITS 7, 8 & 9 IN THE CONDOMINIUM AND ITS ASSOCIATED COMMON ELEMENTS, ALL AS SHOWN HEREON.

SEE PREVIOUSLY RECORDED AMENDED CONDOMINIUM PLAN IN CABINET E, PAGE 60-A

A G STEWART

M.A.P.S. No.11183

Amended Certificate 10

I HEREBY CERTIFY THAT THIS PLAT WAS AMENDED ON 09/22/04 TO ASSIGN GARAGE # TO UNIT 9 AS SHOWN HEREON.

SEE PREVIOUSLY RECORDED AMENDED CONDOMINIUM PLAN IN CABINET E, PAGE 60-A

A G STEWART

M.A.P.S. No.11183

Amended Certificate 9

I HEREBY CERTIFY THAT THIS PLAT WAS AMENDED ON 07/27/04 TO LOCATE AND INCLUDE UNITS 11, 13, 14, 15, 16, 17 & 18 IN THE CONDOMINIUM AND ITS ASSOCIATED COMMON ELEMENTS, ALL AS SHOWN HEREON.

SEE PREVIOUSLY RECORDED AMENDED CONDOMINIUM PLAN IN CABINET E, PAGE 60-A

A G STEWART

M.A.P.S. No.11183

Amended Certificate 7

I HEREBY CERTIFY THAT THIS PLAT WAS AMENDED ON 01/05/04 TO LOCATE AND INCLUDE UNITS 21 & 4 IN THE CONDOMINIUM & ITS ASSOCIATED COMMON ELEMENTS, ALL AS SHOWN HEREON.

SEE PREVIOUSLY RECORDED AMENDED CONDOMINIUM PLAN IN CABINET E, PAGE 60-A

A G STEWART

M.A.P.S. No.11183

Amended Certificate 6

I HEREBY CERTIFY THAT THIS PLAT WAS AMENDED ON 05/26/04 TO SHOW THE GARAGE L.C.E.'S FOR UNITS 4, 10, 19 & 21 ALL AS SHOWN HEREON.

SEE PREVIOUSLY RECORDED AMENDED CONDOMINIUM PLAN IN CABINET E, PAGE 60-A

A G STEWART

M.A.P.S. No.11183

Amended Certificate 5

I HEREBY CERTIFY THAT THIS PLAT WAS AMENDED ON 07/27/04 TO LOCATE AND INCLUDE UNITS 11, 13, 14, 15, 16, 17 & 18 IN THE CONDOMINIUM AND ITS ASSOCIATED COMMON ELEMENTS, ALL AS SHOWN HEREON.

SEE PREVIOUSLY RECORDED AMENDED CONDOMINIUM PLAN IN CABINET E, PAGE 60-A

A G STEWART

M.A.P.S. No.11183

Amended Certificate 4

I HEREBY CERTIFY THAT THIS PLAT WAS AMENDED ON 07/27/04 TO LOCATE AND INCLUDE UNITS 11, 13, 14, 15, 16, 17 & 18 IN THE CONDOMINIUM AND ITS ASSOCIATED COMMON ELEMENTS, ALL AS SHOWN HEREON.

SEE PREVIOUSLY RECORDED AMENDED CONDOMINIUM PLAN IN CABINET E, PAGE 60-A

A G STEWART

M.A.P.S. No.11183

Amended Certificate 3

I HEREBY CERTIFY THAT THIS PLAT WAS AMENDED ON 07/27/04 TO LOCATE AND INCLUDE UNITS 11, 13, 14, 15, 16, 17 & 18 IN THE CONDOMINIUM AND ITS ASSOCIATED COMMON ELEMENTS, ALL AS SHOWN HEREON.

SEE PREVIOUSLY RECORDED AMENDED CONDOMINIUM PLAN IN CABINET E, PAGE 60-A

A G STEWART

M.A.P.S. No.11183

Amended Certificate 2

I HEREBY CERTIFY THAT THIS PLAT WAS AMENDED ON 07/27/04 TO LOCATE AND INCLUDE UNITS 11, 13, 14, 15, 16, 17 & 18 IN THE CONDOMINIUM AND ITS ASSOCIATED COMMON ELEMENTS, ALL AS SHOWN HEREON.

SEE PREVIOUSLY RECORDED AMENDED CONDOMINIUM PLAN IN CABINET E, PAGE 60-A

A G STEWART

M.A.P.S. No.11183

Amended Certificate 1

I HEREBY CERTIFY THAT THIS PLAT WAS AMENDED ON 07/27/04 TO LOCATE AND INCLUDE UNITS 11, 13, 14, 15, 16, 17 & 18 IN THE CONDOMINIUM AND ITS ASSOCIATED COMMON ELEMENTS, ALL AS SHOWN HEREON.

SEE PREVIOUSLY RECORDED AMENDED CONDOMINIUM PLAN IN CABINET E, PAGE 60-A

A G STEWART

M.A.P.S. No.11183

Unit 17 Lower
 Unit 17 Upper

Unit 18 Lower
 Unit 18 Upper

Unit 19
 Unit 19 Lower
 Unit 19 Upper

Unit 20
 Unit 20 Lower
 Unit 20 Upper

Unit 11 Lower
 Unit 11 Upper

Unit 12
 Unit 12 Lower
 Unit 12 Upper

Unit 13 Lower
 Unit 13 Upper

Unit 14 Lower
 Unit 14 Upper

Unit 15 Lower
 Unit 15 Upper

Unit 16 Lower
 Unit 16 Upper

Unit 17 Lower
 Unit 17 Upper

Unit 18 Lower
 Unit 18 Upper

Unit 19 Lower
 Unit 19 Upper

Unit 20 Lower
 Unit 20 Upper

Unit 1 Lower
 Unit 1 Upper

Unit 2
 Unit 2 Lower
 Unit 2 Upper

Unit 3
 Unit 3 Lower
 Unit 3 Upper

Unit 4
 Unit 4 Lower
 Unit 4 Upper

Unit 5
 Unit 5 Lower
 Unit 5 Upper

Unit 6
 Unit 6 Lower
 Unit 6 Upper

Unit 7
 Unit 7 Lower
 Unit 7 Upper

Unit 8
 Unit 8 Lower
 Unit 8 Upper

Unit 9
 Unit 9 Lower
 Unit 9 Upper

Unit 10
 Unit 10 Lower
 Unit 10 Upper

Unit 11 Lower
 Unit 11 Upper

Unit 12
 Unit 12 Lower
 Unit 12 Upper

Unit 13 Lower
 Unit 13 Upper

Unit 14 Lower
 Unit 14 Upper

Unit 15 Lower
 Unit 15 Upper

Unit 16 Lower
 Unit 16 Upper

Unit 17 Lower
 Unit 17 Upper

Unit 18 Lower
 Unit 18 Upper

Unit 19 Lower
 Unit 19 Upper

Unit 20 Lower
 Unit 20 Upper

Unit 1 Lower
 Unit 1 Upper

Unit 2
 Unit 2 Lower
 Unit 2 Upper

Unit 3
 Unit 3 Lower
 Unit 3 Upper

Unit 4
 Unit 4 Lower
 Unit 4 Upper

Unit 5
 Unit 5 Lower
 Unit 5 Upper

Unit 6
 Unit 6 Lower
 Unit 6 Upper

Unit 7
 Unit 7 Lower
 Unit 7 Upper

Unit 8
 Unit 8 Lower
 Unit 8 Upper

Unit 9
 Unit 9 Lower
 Unit 9 Upper

Unit 10
 Unit 10 Lower
 Unit 10 Upper

Unit Definitions

Unit 1
 Unit 2 Lower
 Unit 2 Upper
 Unit 3
 Unit 4
 Unit 5
 Unit 6
 Unit 7
 Unit 8
 Unit 9 Lower
 Unit 9 Upper
 Unit 10 Lower
 Unit 10 Upper

County Clerk Indexing Information

AGS LAND SURVEYING
 OIL STEWART
 NEW MEXICO LICENSE NO. 11933
 P.O. BOX 205
 EL PASO, TEXAS 79901
 (972) 231-1111

County Clerk: K & A Enterprises, L.L.C.
 P.O. Box 444
 Amory, Nevada, NV 89314

Zone: R-14 - Multi Family Residential

Residencia del Rio Pueblo
 or LAMAS RIVER COMMUNITY CONDOMINIUM 25 NORTH
 LAMAS RIVER COMMUNITY CONDOMINIUM 25 NORTH
 UNIT 20 GARAGE L.C.E. ALL AS SHOWN HEREON.

Unit Definition: Unit 20
 Date: 11/27/02
 Plate No: 17291

