

SEO  $\Delta$  "HARTT"  
 S 78°26'52" W  
 2583.42'

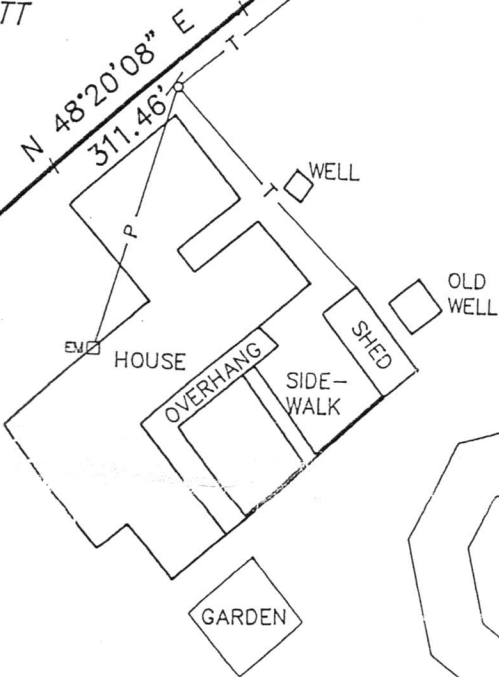
STATE ROAD NO. 240  
 S 34°19'44" E  
 95.28'

N/F CHARLES HARTT

STA. 19+25.13  $\Delta$

$\Delta$  = 03°42'  
 R = 1930.  
 L = 124.9  
 C = S 36  
 124.8

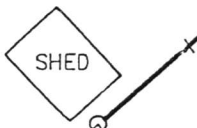
1.387 ACRES  $\pm$   
 TR. 107, MAP 40,  
 SURVEY 2



DRIVEWAY  
 151.03'  
 S 48°58'58" W

N/F HARTT CEME

CONFLICT AREA  
 0.021 OF AN ACRE  $\pm$



S 67°21'21" E - 112.04'  
 N 62°08'02" W  
 175.87'

N/F PAT MARTINEZ

S 53°07'21" E  
 65.10'  
 228.38'  
 W.C.  
 56.65'  
 S 50°42'10" W  
 N/F PAT MARTINEZ

S 50°42'10" W,  
 20.00'

CONFLICT AREA  
 BEGINNING at a point used for the S.E. corner of this area on the centerline of the Little Rio Grande River, and the true point of beginning, thence along said centerline;