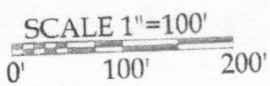


STATE OF NEW MEXICO)
 COUNTY OF TAOS)SS
 This is a conformed copy of a Plat
 which was filed for record on the 10th of June
 A.D. 2006 at 4:30 o'clock PM per receipt # PAGE 97-B
 (provided as per request of EDWARD M. DAVIS)
 COUNTY CLERK & RECORDER
 By [Signature] Deputy

Line	Bearing	Distance
1	S 1° 42' 09" E	57.46'
2	S 7° 52' 04" W	41.16'
3	S 2° 47' 43" W	86.36'
4	S 16° 30' 40" W	32.87'
5	S 6° 41' 16" W	35.95'
6	S 1° 18' 41" W	88.69'
7	S 16° 03' 43" W	38.06'
8	S 58° 00' 55" W	36.44'
9	S 62° 48' 21" W	36.27'
10	S 52° 47' 43" W	29.23'
11	S 39° 17' 59" W	29.23'
12	S 39° 06' 36" W	41.37'
13	S 54° 38' 50" W	41.48'
14	S 78° 10' 11" W	44.48'
15	N 87° 05' 42" W	80.32'



CHARLES AND VEVA BROOKS, TRUST
 BOOK A 238, PAGE 997
 N1/2NW1/4
 LOT 5, BLOCK 10

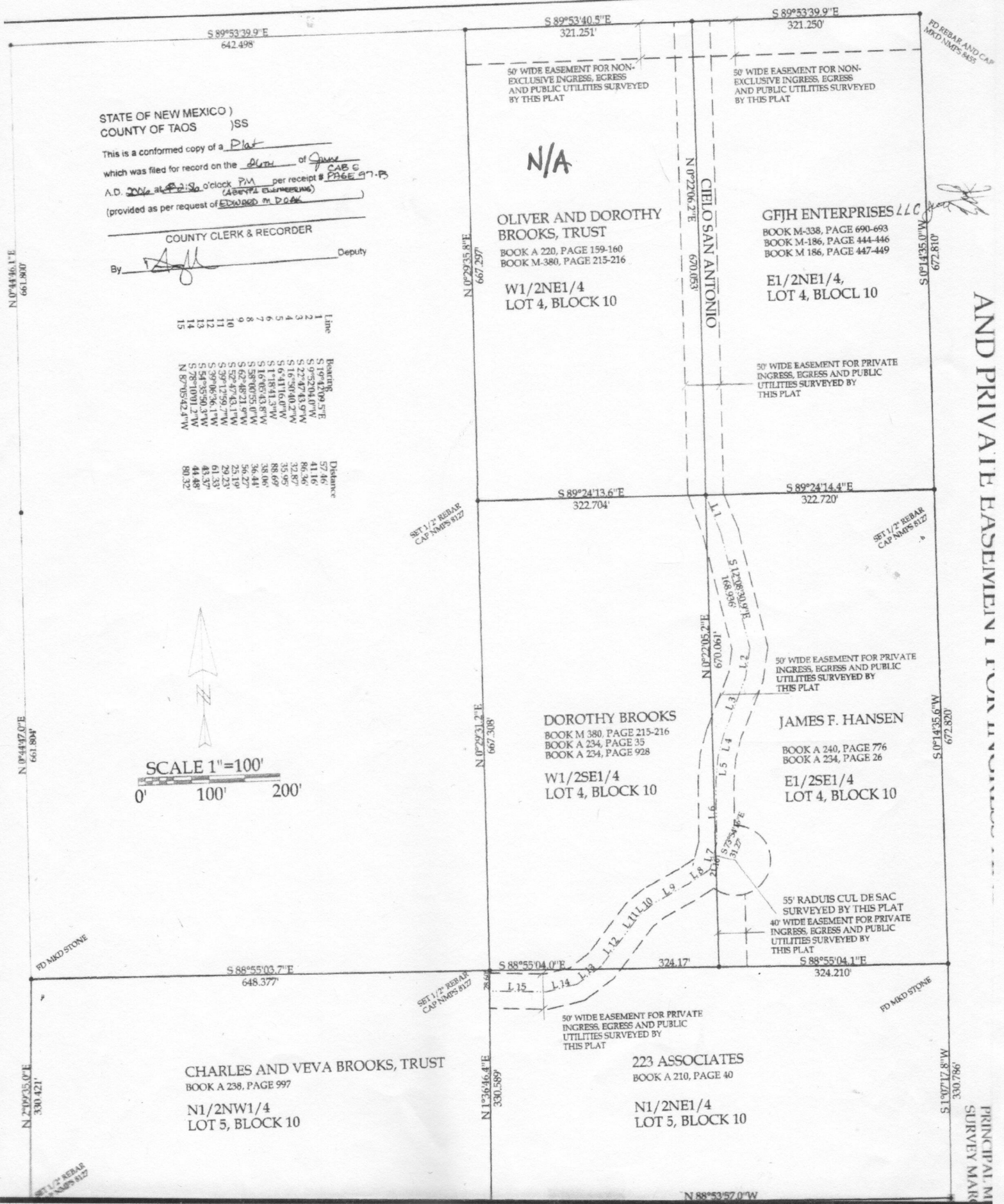
N/A
 OLIVER AND DOROTHY BROOKS, TRUST
 BOOK A 220, PAGE 159-160
 BOOK M-380, PAGE 215-216
 W1/2NE1/4
 LOT 4, BLOCK 10

DOROTHY BROOKS
 BOOK M 380, PAGE 215-216
 BOOK A 234, PAGE 35
 BOOK A 234, PAGE 928
 W1/2SE1/4
 LOT 4, BLOCK 10

GFJH ENTERPRISES LLC
 BOOK M-338, PAGE 690-693
 BOOK M-186, PAGE 444-446
 BOOK M 186, PAGE 447-449
 E1/2NE1/4,
 LOT 4, BLOCL 10

JAMES F. HANSEN
 BOOK A 240, PAGE 776
 BOOK A 234, PAGE 26
 E1/2SE1/4
 LOT 4, BLOCK 10

223 ASSOCIATES
 BOOK A 210, PAGE 40
 N1/2NE1/4
 LOT 5, BLOCK 10



PRINCIPAL M SURVEY MARK AND PRIVATE EASEMENT FOR